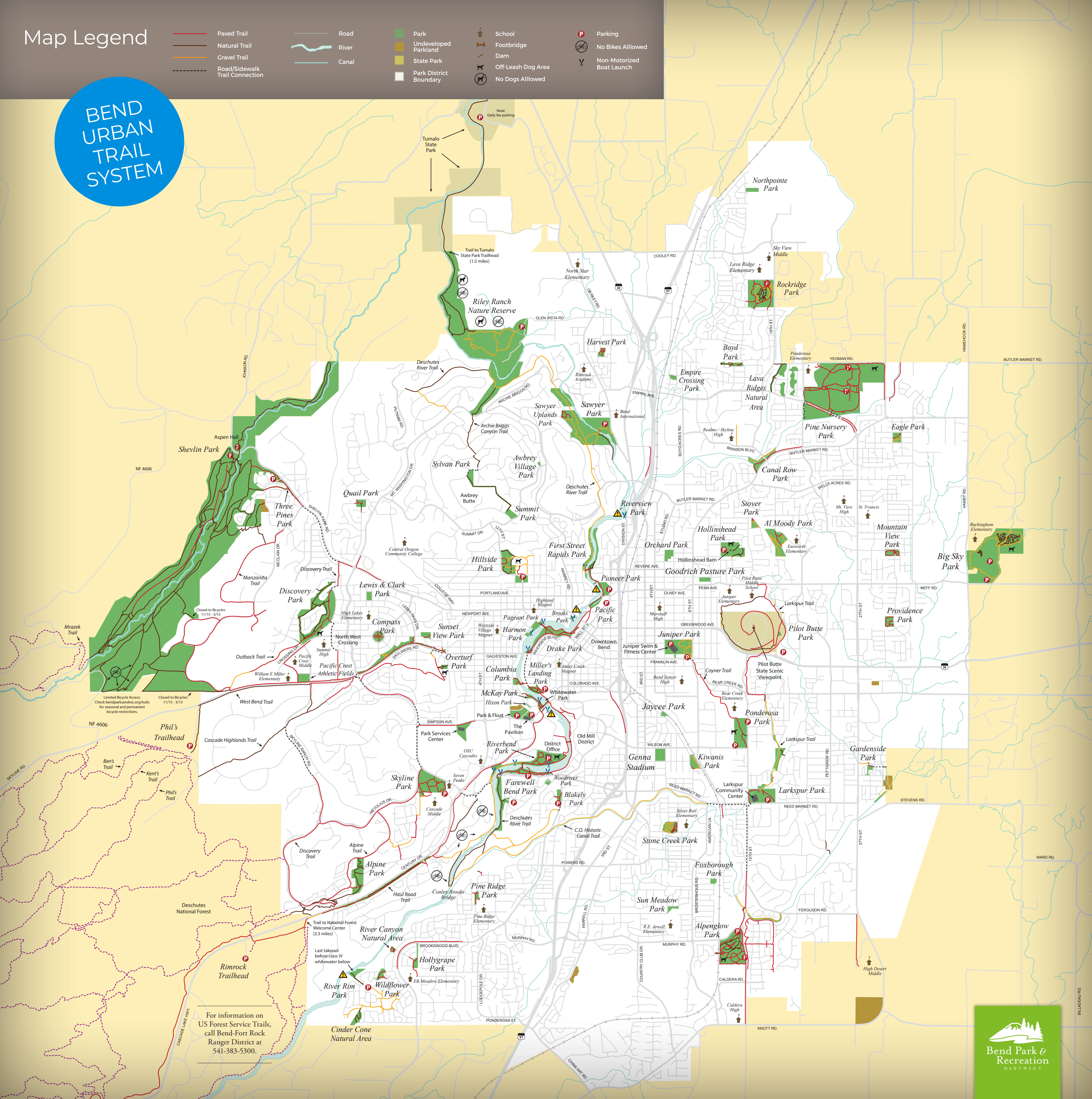


- Paved Trail
- Natural Trail
- Gravel Trail
- Road/Sidewalk Trail Connection

**BEND
URBAN
TRAIL
SYSTEM**



The Bend Urban Trails System, developed and managed jointly by the Bend Park & Recreation District and the City of Bend, connects our community and encourages recreation and non-motorized transportation.

TRAIL ACCESSIBILITY

It is the goal of Bend Park & Recreation District to provide trail access for all. However, not all existing trail segments are fully accessible routes. The trails on this map may present obstacles, running slopes, cross slopes, narrow tread widths and unstable surfaces, making them inaccessible for some users. Trails at Alpenglow, Farewell Bend, Riverbend, Pioneer and Pine Nursery parks offer the best access for visitors with mobility aids. Updated information about the condition and accessibility of trails is available by calling 541-389-7275. It is the trail user's responsibility to determine if trail difficulty is appropriate for his or her skill level.

Unless otherwise indicated, dogs must be leashed on trails and in parks. Bend has nine areas for people to recreate with their dogs off-leash. See reverse.

The Bend Park & Recreation District, along with the City of Bend and private land owners, is working toward implementing the community's vision for an uninterrupted river trail, running through the heart of Bend. Once fully completed, the 19-mile trail will extend from Tumalo State Park to Meadow Camp with further connections to Sunriver. This map shows existing trails and access points open to public use. The map also shows the river water trail access points. The Deschutes River Trail (DRT) is divided into five reaches, defined by the surrounding landscape character.

DRT - RIVER RUN REACH: Located between Pioneer and Sawyer parks, this section is located mostly on the river's west bank and on top of the Tumalo irrigation canal pipe. The wide trail surface is relatively flat. It runs between the river and a high canyon wall, and passes through the River's Edge golf course and adjacent neighborhoods. Boat landings at First Street Rapids Park and Riverview Park provide river access. Several wetlands can be seen in this reach, inhabited by ospreys, songbirds, trumpeter swans, otter and beaver.

DRT - OLD MILL REACH: Located from Farewell Bend to McKay parks, trails are present on both sides of the river in addition to an extensive private trail system throughout the Old Mill District. Once home to two large lumber mills, today the Old Mill is a mix of parks, trails, shops and other businesses. Three footbridges connect trails across the river, providing convenient loops. Farewell Bend and Riverbend parks provide boat landings for paddlers using the Deschutes River water trail.

West side of the river: Bicycles are not allowed on this trail section, but there is an alternative bike route that connects the Bill Healy Bridge to the Haul Road Trail along Century Drive.

The Deschutes River corridor also provides water-based trail opportunities allowing paddlers to enjoy the river while connecting to parks and other destinations. Access points and boat landings are at several locations. Be aware that the river difficulty changes dramatically from gentle moving water to Class 4 rapids above the Bill Healy Bridge. Floating the section above the Healy Bridge is recommended only for expert boaters. The Bend Hydro and Tumalo Irrigation dams require mandatory portaging. Featuring pneumatically-controlled waves, the Bend Whitewater Park in the Old Mill District has Class I - IV rapids. Look for more information on reverse and online at bendparksandrec.org.

This 2.9-mile trail begins at Overturf Park and travels west over Overturf Butte through neighborhoods to Mt. Washington Dr. It then continues west through Cascade Highlands before connecting to the Forest Service Phil's Trail system.

HISTORIC CANAL TRAIL
From the trailhead at Blakely Park, the trail follows along Brookwood Blvd. and then heads southwest through Central Oregon Irrigation District (COID) property to an intersection with the Deschutes River Trail where users can travel along the river. Or, from Blakely Park, trail users can cross Brookwood Blvd. and head south to the Central Oregon Canal and take the canal ditch-road east to American Lane and beyond. The trail is 3.5 miles from Reed Market Rd. to the river.

Haul Road Trail originates from McKay Park and travels west 3.2 miles to public lands connecting to the Deschutes National Forest trail system.

The Larkspur Trail extends 4.1 miles between Pilot Butte Middle School and Larkspur Park, passing through Pinewood Natural Area and Pilot Butte State Park. Users can add an additional mile and wide vista views with the trail to the summit of Pilot Butte.

These trails explore open meadows, forests, lava flows, cliffs and the river's rocky canyon with several loops to explore. (No bikes or dogs allowed.)

The **Juniper Loop** is 0.7 mile. The **Sage Flats Loop** is 0.9 mile. Both combine for a 1.6 mile loop.

The Canyon Loop is 1.25 miles and the state park trail extends 1.3 miles to Tumalo State Park.

Completing the three loop trails is approximately 6.5 miles.

Shevlin Park is home to a diverse old-growth forest and an abundance of animals including birds, deer, elk and the occasional cougar and bear. To keep wildlife safe, dogs must be leashed.

Shevlin Loop Trail: This 6-mile trail follows the canyon rim, runs through old-growth ponderosa pine and crosses Tumalo Creek twice.

Tumalo Creek Trail: This 2.5-mile trail follows the creek upstream from the park entrance to the park's southern end, joining the Deschutes National Forest trail system. A preferred route for mountain bikes, the trail follows the canyon and links with the Forest Service Mrazek Trail.

For more trail summaries, interactive maps and additional details about BPRD trails, visit bendparksandrec.org/trail-locator.

