

Play for life



BEND  
URBAN  
PARKS &  
TRAIL  
MAP

your  
adventure  
planner

**WELCOME!**

**PARK & TRAIL RULES & REGULATIONS:**  
These rules are in place for the safety and comfort of all park users. Please enjoy your visit. Park users are responsible for knowing and following all park rules. This is a partial list.

For the full rules and regulations text, call 541-389-7275 or visit our website at [bendparksandrec.org](http://bendparksandrec.org).

For police matters, call 541-693-6911. For emergencies, dial 911.

- Parks and trails are open 5:00 a.m. to 10:00 p.m. daily.
- City ordinances require that dogs must be on leash at all times within the city limits (except at designated off-leash areas) and their waste properly removed. Dog "rest stops" along the trails and in the parks provide you with disposal bags and trash cans.
- Do not litter. Trash cans are located throughout the park and trail system.
- Vehicles must remain on roadways or in parking areas. No parking on district property between 10:00 p.m. and 5:00 a.m.
- No camping, smoking or fires allowed. Alcoholic beverages allowed by permit only.
- Feeding geese, ducks, other waterfowl and wildlife is not allowed. Removing vegetation is not allowed.
- Propane cook stoves are allowed; no charcoal grills allowed.
- Metal detectors allowed by permit only.
- The use of airborne projectiles, including golf and archery, is not allowed.
- Sales and concessions allowed by permit only.

**TRAIL USE:**

- Some sections of the trail are on private property. Please stay on the designated trail.
- Areas along the river are sensitive wildlife habitats. Please do not walk along the river bank.
- Cyclists, watch your speed and always yield to other users. Bicycles are allowed on most trails and pathways. Electric-assisted bicycles, as defined in ORS 801.258, are also permitted and subject to all district rules applicable to bicycles.
- Bicyclists are not allowed in Riley Ranch Nature Reserve and on some sections of the trails. Please observe pedestrian-only trail sections. No motorized vehicles allowed on trails.

**CONTACT US:**  
 District Office & Recreation 541-389-7275  
 Juniper Swim & Fitness Center 541-389-7665  
 Larkspur Community Center 541-388-1133  
 The Pavilion 541-389-7588  
 Park Services 541-388-5435  
 Park & Facility Reservations 541-706-6149  
 Email: [info@bendparksandrec.org](mailto:info@bendparksandrec.org)  
 Website: [bendparksandrec.org](http://bendparksandrec.org)



**BEND PARKS & TRAILS**

Go for a walk, hike or ride and explore Bend's beautiful parks and trails. Bend Park and Recreation District is proud to offer more than 3,000 acres (86 properties) of parks and open spaces including community, neighborhood, sports and riverfront parks. You'll find great picnic spots as well as places to play in the neighborhood parks. Larger parks, such as Drake, Riverbend, Big Sky, Pine Nursery and Farewell Bend, host a variety of community events and activities. If you are looking for an experience in nature, a visit to Shevlin Park or Riley Ranch Nature Reserve is in order, but please note that dogs and bikes are not allowed at Riley Ranch.

**JUNIPER SWIM & FITNESS CENTER**

Juniper Swim and Fitness Center has Central Oregon's first and only Olympic-sized 50-meter swimming pool, a 25-meter pool, a children's pool, a spa and fitness facilities. Juniper also offers an extensive array of swimming and fitness programs for people of all ages and abilities. Drop in and hit the weights, the yoga studio or one of the pools for any number of healthy activities. Childcare is available, too. Pool and fitness schedules available online.



**LARKSPUR COMMUNITY CENTER - HOME OF THE BEND SENIOR CENTER**

Larkspur Community Center is a vibrant place where people of all ages, interests and abilities can gather for lifelong fitness, learning and recreation. At 34,000 square feet, Larkspur features many fitness, swim and enrichment amenities including classrooms, group fitness spaces, fitness center with walk/jog track, an aquatics center with a pool, current channel and hot tub, and a cafe and community space. Activity schedules available online.



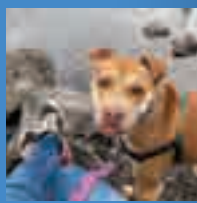
**THE PAVILION**

The Pavilion is a covered, open-air recreation facility with a full-size ice rink in winter and multi-purpose roller skating rink and sport courts in summer. Winter activities include open skate, hockey, curling, figure skating and "learn-to" classes to help you get started. Summer programs include roller skating, roller hockey, youth camps and sport activities. Schedules available online.



**DOGS IN PARKS & OFF-LEASH AREAS**

Unless otherwise indicated, dogs must be leashed on trails and in parks. Bend has nine areas for people to recreate with their dogs off-leash. Look for the dog icon on the map or in the park features list to locate an off-leash area. To keep wildlife and dogs safe, note that dogs are not allowed at Riley Ranch Nature Reserve.



**RENT A PARK, PICNIC SHELTER OR FACILITY**

The district's parks, picnic shelters and facilities have played host to many festive events over the years. Aspen Hall, Hollinshead Barn, Riverbend Community Room and Larkspur's event room are popular facilities to rent for gatherings, weddings, reunions and more. To reserve a facility, visit [bendparksandrec.org](http://bendparksandrec.org) or call 541-706-6149.



**ADOPT A PARK OR TRAIL:**

The Adopt a Trail and Adopt a Park programs give community groups, families and individuals an opportunity to keep our parks and trails beautiful and fun for all. For more information, visit the website or call 541-389-7275.

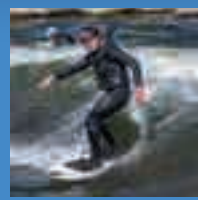


**BEND PARKS & RECREATION FACILITIES**



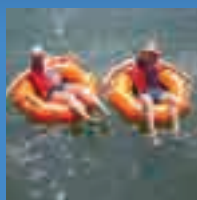
**BEND WHITEWATER PARK & RIVER RECREATION**

Floating and paddling the Deschutes River is popular from Riverbend Park to Drake Park. Midway down the floating corridor is the Bend Whitewater Park.



The in-water park features three channels - the left channel offers fish and floaters a fish ladder with Class I and II rapids, the center channel has whitewater waves for surfers and kayakers and the right channel is reserved for wildlife habitat. Look for details and condition reports online at [bendwhitewaterpark.com](http://bendwhitewaterpark.com).

For launch sites, look for the crossed oars symbols on the map. ✪ All river users must either exit the river and walk around or ride through the fish ladder's rapids. If floating through, be sure you have a durable tube. Flatwater paddleboarders and those with small children should walk around. Watch for the warning signs and exit the river on the left before the Colorado Avenue bridge.



Start your river adventure at Park & Float on Simpson Avenue. The Ride-the-River shuttle operates from Park & Float and Riverbend and Drake parks during the summer. For schedules and fees, visit Cascades East Transit at [cascadeseasttransit.com](http://cascadeseasttransit.com) or call 541-385-8680.

**Map Legend**

- Road
- Canal
- River
- Park
- Undeveloped Park Land
- State Park
- 🏫 School
- 🐕 Off-Leash Dog Area
- 🚫 No Dogs Allowed
- 🅒 Parking
- ✪ Non-Motorized Boat Launch
- 🏰 Dam
- ⚠️ River Hazard
- 🌉 Footbridge
- Park District Boundary
- 🚲 No Bikes Allowed

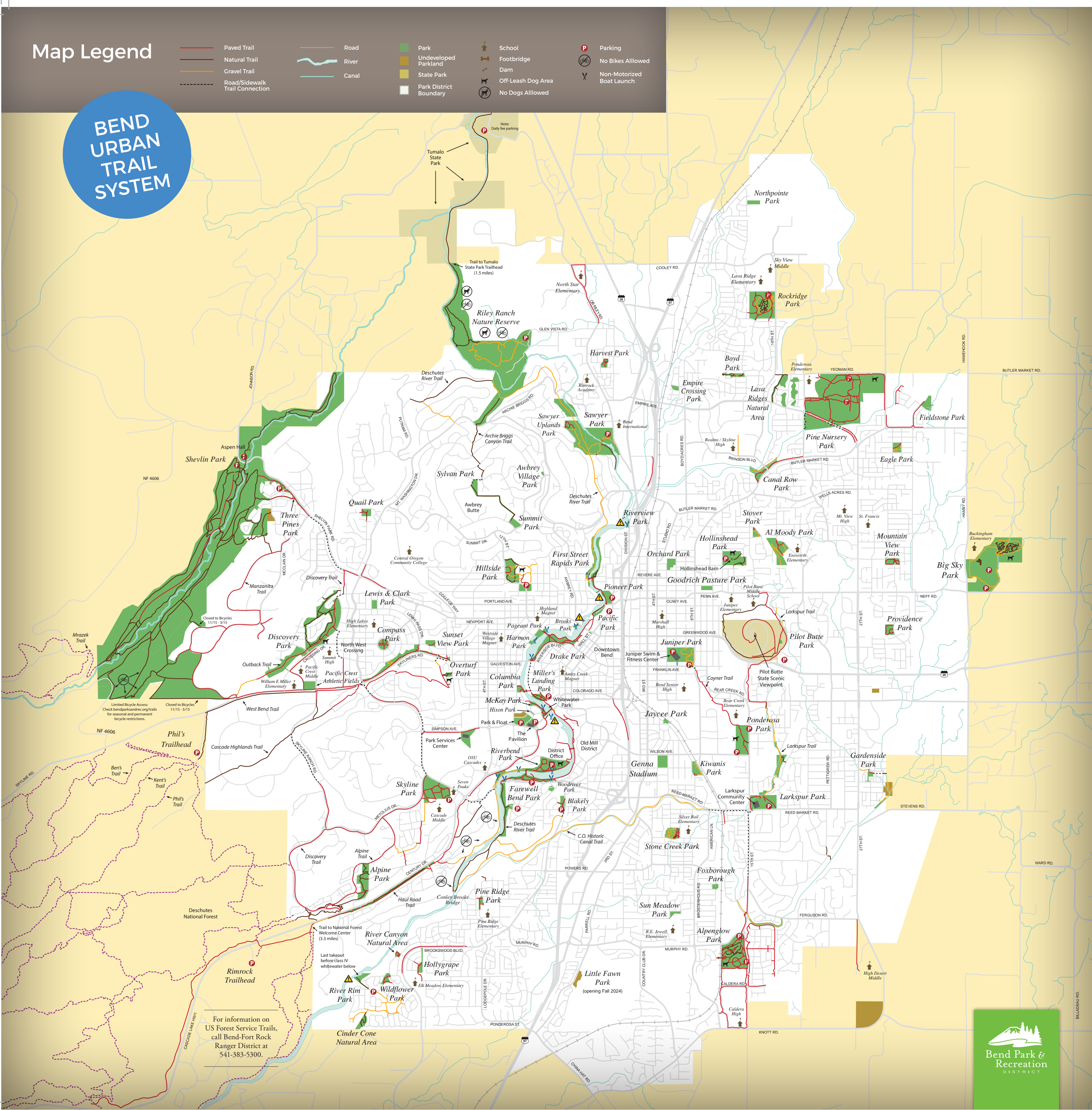
**PARK LOCATIONS & FEATURES**

| PARK NAME                     | ADDRESS                  | MAP LOCATION | BASKETBALL | BICYCLE | DISC GOLF | DOG OFF-LEASH AREAS | FACILITY RENTALS | FISHING | HORSESHOES | NATURAL AREAS | PICKLEBALL | PICNIC SHELTER | PLAYGROUND | RESTROOMS (YEAR-ROUND) | RESTROOMS (SEASONAL) | RIVER ACCESS | SKATEBOARDING | TENNIS |
|-------------------------------|--------------------------|--------------|------------|---------|-----------|---------------------|------------------|---------|------------|---------------|------------|----------------|------------|------------------------|----------------------|--------------|---------------|--------|
| Al Moody Park                 | 2225 NE Daggett Ln       | J-6          |            |         |           |                     |                  |         |            |               |            |                |            |                        |                      |              |               |        |
| Alpenglow Park                | 6049 SE 15th St          | F-2          |            |         |           |                     |                  |         |            |               |            |                |            |                        |                      |              |               |        |
| Alpine Park                   | 19500 Century Dr         | D-11         |            |         |           |                     |                  |         |            |               |            |                |            |                        |                      |              |               |        |
| Awbrey Village Park           | 3015 NW Merchant Way     | F-5          |            |         |           |                     |                  |         |            |               |            |                |            |                        |                      |              |               |        |
| BPRD Office                   | 799 SW Columbia St       | F-9          |            |         |           |                     |                  |         |            |               |            |                |            |                        |                      |              |               |        |
| Bend Whitewater Park          | 166 SW Shevlin Hixon Rd  | F-8          |            |         |           |                     |                  |         |            |               |            |                |            |                        |                      |              |               |        |
| Big Sky Park                  | 21690 NE Neff Rd         | L-6          |            |         |           |                     |                  |         |            |               |            |                |            |                        |                      |              |               |        |
| Blakely Park                  | 1155 SW Brookwood Blvd   | G-10         |            |         |           |                     |                  |         |            |               |            |                |            |                        |                      |              |               |        |
| Boyd Park                     | 20750 NE Comet Ln        | I-3          |            |         |           |                     |                  |         |            |               |            |                |            |                        |                      |              |               |        |
| Brooks Park                   | 35 NW Drake Rd           | G-7          |            |         |           |                     |                  |         |            |               |            |                |            |                        |                      |              |               |        |
| Canal Row Park                | 1630 NE Butler Market Rd | I-5          |            |         |           |                     |                  |         |            |               |            |                |            |                        |                      |              |               |        |
| Cinder Cone Natural Area      | 19400 Goldenwood Ct      | D-13         |            |         |           |                     |                  |         |            |               |            |                |            |                        |                      |              |               |        |
| Columbia Park                 | 264 NW Columbia St       | F-8          |            |         |           |                     |                  |         |            |               |            |                |            |                        |                      |              |               |        |
| Compass Park                  | 2500 NW Crossing Dr      | D-7          |            |         |           |                     |                  |         |            |               |            |                |            |                        |                      |              |               |        |
| Discovery Park                | 1315 NW Discovery Ave    | C-7          |            |         |           |                     |                  |         |            |               |            |                |            |                        |                      |              |               |        |
| Drake Park                    | 777 NW Riverside Blvd    | F-7          |            |         |           |                     |                  |         |            |               |            |                |            |                        |                      |              |               |        |
| Eagle Park                    | 62891 NE Nolan St        | K-4          |            |         |           |                     |                  |         |            |               |            |                |            |                        |                      |              |               |        |
| Empire Crossing Park          | 63145 Lancaster St       | H-3          |            |         |           |                     |                  |         |            |               |            |                |            |                        |                      |              |               |        |
| Farewell Bend Park            | 1000 SW Reed Market Rd   | F-9          |            |         |           |                     |                  |         |            |               |            |                |            |                        |                      |              |               |        |
| Fieldstone Park               | 3750 Eagle Rd            | L-4          |            |         |           |                     |                  |         |            |               |            |                |            |                        |                      |              |               |        |
| First St. Rapids Park         | 1980 NW First St         | G-6          |            |         |           |                     |                  |         |            |               |            |                |            |                        |                      |              |               |        |
| Foxborough Park               | 61308 Sunflower Ln       | F-11         |            |         |           |                     |                  |         |            |               |            |                |            |                        |                      |              |               |        |
| Gardenside Park               | 67150 Darla Pl           | K-9          |            |         |           |                     |                  |         |            |               |            |                |            |                        |                      |              |               |        |
| Goodrich Pasture Park         | 941 NE Quimby Ave        | I-6          |            |         |           |                     |                  |         |            |               |            |                |            |                        |                      |              |               |        |
| Harmon Park                   | 1100 NW Harmon Rd        | F-7          |            |         |           |                     |                  |         |            |               |            |                |            |                        |                      |              |               |        |
| Harvest Park                  | 63240 NW Lavaxcrest St   | G-3          |            |         |           |                     |                  |         |            |               |            |                |            |                        |                      |              |               |        |
| Hillside Park                 | 2050 NW 12th St          | F-6          |            |         |           |                     |                  |         |            |               |            |                |            |                        |                      |              |               |        |
| Hixon Park                    | 125 SW Crowell Way       | F-8          |            |         |           |                     |                  |         |            |               |            |                |            |                        |                      |              |               |        |
| Hollinshead Park              | 1235 NE Jones Rd         | I-6          |            |         |           |                     |                  |         |            |               |            |                |            |                        |                      |              |               |        |
| Hollygrape Park               | 19489 SW Hollygrape St   | E-12         |            |         |           |                     |                  |         |            |               |            |                |            |                        |                      |              |               |        |
| Jaycee Park                   | 478 Railroad St          | H-8          |            |         |           |                     |                  |         |            |               |            |                |            |                        |                      |              |               |        |
| Juniper Park                  | 800 NE 6th St            | H-7          |            |         |           |                     |                  |         |            |               |            |                |            |                        |                      |              |               |        |
| Juniper Swim & Fitness Center | 800 NE 6th St            | H-7          |            |         |           |                     |                  |         |            |               |            |                |            |                        |                      |              |               |        |
| Kiwanis Center                | 800 SE Centennial Blvd   | H-9          |            |         |           |                     |                  |         |            |               |            |                |            |                        |                      |              |               |        |
| Larkspur Community Center     | 1600 SE Reed Market Rd   | I-10         |            |         |           |                     |                  |         |            |               |            |                |            |                        |                      |              |               |        |
| Larkspur Park                 | 1700 SE Reed Market Rd   | I-10         |            |         |           |                     |                  |         |            |               |            |                |            |                        |                      |              |               |        |
| Lewis & Clark Park            | 2520 NW Lemhi Pass Dr    | D-7          |            |         |           |                     |                  |         |            |               |            |                |            |                        |                      |              |               |        |
| Little Fawn Park              | 61012 Parrell Rd         | G-12         |            |         |           |                     |                  |         |            |               |            |                |            |                        |                      |              |               |        |
| McKay Park                    | 166 SW Shevlin Hixon Dr  | F-8          |            |         |           |                     |                  |         |            |               |            |                |            |                        |                      |              |               |        |
| Miller's Landing Park         | 55 NW Riverside Blvd     | F-8          |            |         |           |                     |                  |         |            |               |            |                |            |                        |                      |              |               |        |
| Mountain View Park            | 1975 NE Providence Dr    | K-6          |            |         |           |                     |                  |         |            |               |            |                |            |                        |                      |              |               |        |
| Northpointe Park              | 63800 Wellington St      | H-1          |            |         |           |                     |                  |         |            |               |            |                |            |                        |                      |              |               |        |
| Orchard Park                  | 2001 NE 6th St           | H-6          |            |         |           |                     |                  |         |            |               |            |                |            |                        |                      |              |               |        |
| Overturf Park                 | 475 NW 17th St           | E-8          |            |         |           |                     |                  |         |            |               |            |                |            |                        |                      |              |               |        |
| Pacific Crest Athletic Fields | 19150 NW Skyliners Rd    | C-8          |            |         |           |                     |                  |         |            |               |            |                |            |                        |                      |              |               |        |
| Pacific Park                  | 200 NW Pacific Park Ln   | G-7          |            |         |           |                     |                  |         |            |               |            |                |            |                        |                      |              |               |        |
| Pageant Park                  | 691 NW Drake Rd          | F-7          |            |         |           |                     |                  |         |            |               |            |                |            |                        |                      |              |               |        |
| The Pavilion                  | 1001 SW Bradbury Way     | F-9          |            |         |           |                     |                  |         |            |               |            |                |            |                        |                      |              |               |        |
| Pilot Butte Neighborhood Park | 1310 NE Highway 20       | J-7          |            |         |           |                     |                  |         |            |               |            |                |            |                        |                      |              |               |        |
| Pine Nursery Park             | 3750 NE Purcell Blvd     | J-4          |            |         |           |                     |                  |         |            |               |            |                |            |                        |                      |              |               |        |
| Pine Ridge Park               | 61250 Linfield Ct        | E-11         |            |         |           |                     |                  |         |            |               |            |                |            |                        |                      |              |               |        |
| Pioneer Park                  | 1525 NW Wall St          | G-6          |            |         |           |                     |                  |         |            |               |            |                |            |                        |                      |              |               |        |
| Ponderosa Park                | 225 SE 15th St           | I-9          |            |         |           |                     |                  |         |            |               |            |                |            |                        |                      |              |               |        |
| Providence Park               | 1055 NE Providence Dr    | K-7          |            |         |           |                     |                  |         |            |               |            |                |            |                        |                      |              |               |        |
| Quail Park                    | 2755 NW Regency St       | D-5          |            |         |           |                     |                  |         |            |               |            |                |            |                        |                      |              |               |        |
| Riley Ranch Nature Reserve    | 19975 Glen Vista         | E-3          |            |         |           |                     |                  |         |            |               |            |                |            |                        |                      |              |               |        |
| River Canyon Natural Area     | 61005 Snowbrush Dr       | D-12         |            |         |           |                     |                  |         |            |               |            |                |            |                        |                      |              |               |        |
| River Rim Park                | 19400 Charleswood Ln     | D-12         |            |         |           |                     |                  |         |            |               |            |                |            |                        |                      |              |               |        |
| Riverbend Park                | 799 SW Columbia St       | F-9          |            |         |           |                     |                  |         |            |               |            |                |            |                        |                      |              |               |        |
| Riverview Park                | 225 NE Division St       | G-5          |            |         |           |                     |                  |         |            |               |            |                |            |                        |                      |              |               |        |
| Rockridge Park                | 20885 Egypt Dr           | I-2          |            |         |           |                     |                  |         |            |               |            |                |            |                        |                      |              |               |        |
| Sawyer Park                   | 62999 O.B. Riley Rd      | G-4          |            |         |           |                     |                  |         |            |               |            |                |            |                        |                      |              |               |        |
| Sawyer Uplands Park           | 700 NW Yosemite Dr       | G-4          |            |         |           |                     |                  |         |            |               |            |                |            |                        |                      |              |               |        |
| Shevlin Park                  | 18920 NW Shevlin Pk Rd   | B-4          |            |         |           |                     |                  |         |            |               |            |                |            |                        |                      |              |               |        |
| Skyline Park                  | 19617 Mountaineer Way    | E-9          |            |         |           |                     |                  |         |            |               |            |                |            |                        |                      |              |               |        |
| Stone Creek Park              | 61531 Stone Creek Ln     | H-10         |            |         |           |                     |                  |         |            |               |            |                |            |                        |                      |              |               |        |
| Stover Park                   | 1650 NE Watson Dr        | F-5          |            |         |           |                     |                  |         |            |               |            |                |            |                        |                      |              |               |        |
| Summit Park                   | 1150 NW Promontory Dr    | I-6          |            |         |           |                     |                  |         |            |               |            |                |            |                        |                      |              |               |        |
| Sun Meadow Park               | 61150 Dayspring Dr       | H-11         |            |         |           |                     |                  |         |            |               |            |                |            |                        |                      |              |               |        |
| Sunset View Park              | 990 NW Stannum Rd        | E-7          |            |         |           |                     |                  |         |            |               |            |                |            |                        |                      |              |               |        |
| Sylvan Park                   | 2996 NW Three Sisters Dr | E-5          |            |         |           |                     |                  |         |            |               |            |                |            |                        |                      |              |               |        |
| Three Pines Park              | 19089 Mt Hood Pl         | C-5          |            |         |           |                     |                  |         |            |               |            |                |            |                        |                      |              |               |        |
| Wildflower Park               | 60955 River Rim Dr       | D-12         |            |         |           |                     |                  |         |            |               |            |                |            |                        |                      |              |               |        |
| Woodrider Park                | 61690 Woodrider Dr       | F-9          |            |         |           |                     |                  |         |            |               |            |                |            |                        |                      |              |               |        |

# Map Legend

- Paved Trail
- Natural Trail
- Gravel Trail
- - - Road/Sidewalk Trail Connection
- Road
- ~ River
- Canal
- Park
- Undeveloped Parkland
- State Park
- Park District Boundary
- 🏫 School
- 🌉 Footbridge
- 🏰 Dam
- 🐕 Off-Leash Dog Area
- 🚫🐕 No Dogs Allowed
- P Parking
- 🚫🚲 No Bikes Allowed
- 🚫🚗 Non-Motorized
- 🚤 Boat Launch

## BEND URBAN TRAILS SYSTEM



Limited Bicycle Access: Check bendparksandrec.org/trails for seasonal and permanent bicycle restrictions.

Closed to Bicycles 11/15 - 3/15

For information on US Forest Service Trails, call Bend-Fort Rock Ranger District at 541-383-5300.

## WELCOME TO THE BEND URBAN TRAILS SYSTEM

The Bend Urban Trails System, developed and managed jointly by the Bend Park and Recreation District and the City of Bend, connects our community and encourages recreation and non-motorized transportation.

Trails in the system traverse many different landscapes, including established parks, natural areas and urban areas. The Urban Trails System is growing with more trails under development each year. The Bend Park and Recreation District is committed to expanding and improving the trail system routes as funding and opportunities allow.

### TRAIL ACCESSIBILITY

It is the goal of Bend Park and Recreation District to provide trail access for all. However, not all existing trail segments are fully accessible routes. The trails on this map may present obstacles, running slopes, cross slopes, narrow tread widths and unstable surfaces, making them inaccessible for some users. Trails at Alpenglow, Farewell Bend, Riverbend, Pioneer and Pine Nursery parks offer the best access for visitors with mobility aids. Updated information about the condition and accessibility of trails is available by calling 541-389-7275. It is the trail user's responsibility to determine if trail difficulty is appropriate for their skill level.

### DOGS ON TRAILS & IN PARKS

Unless otherwise indicated, dogs must be leashed on trails and in parks. Bend has nine areas for people to recreate with their dogs off-leash. See reverse.

### DESCHUTES RIVER TRAIL

The Bend Park and Recreation District, along with the City of Bend and private land owners, is working toward implementing the community's vision for an uninterrupted river trail, running through the heart of Bend. Once fully completed, the 19-mile trail will extend from Tumalo State Park to Meadow Camp with further connections to Sunriver. This map shows existing trails and access points open to public use. The map also shows the river water trail access points. The Deschutes River Trail (DRT) is divided into five reaches, defined by the surrounding landscape character.

**DRT - AWBREY REACH:** North of Sawyer Park, this section is constructed on top of the buried Tumalo irrigation canal. It includes a few moderate hills. Along the middle stretch, the river drops into a deep canyon, while the trail stays high on the canyon wall, offering spectacular views of the river and the Cascades. A steep climb up the Archie Briggs Canyon Trail connects to Mt. Washington Drive. Best access is from Sawyer Park.

**DRT - RIVER RUN REACH:** Located between Pioneer and Sawyer parks, this section is located mostly on the river's west bank and on top of the Tumalo irrigation canal pipe. The wide trail surface is relatively flat. It runs between the river and a high canyon wall, and passes through the River's Edge golf course and adjacent neighborhoods. Boat landings at First Street Rapids Park and Riverview Park provide river access. Several wetlands can be seen in this reach, inhabited by ospreys, songbirds, trumpeter swans, otter and beaver.

**DRT - PIONEER REACH:** Located between McKay and Pioneer parks, this reach passes through Bend's oldest sections and the trail is sometimes off-river, following sidewalks through neighborhoods, and through Drake Park on Mirror Pond. There is a boardwalk along the river at Drake Park, an undercrossing and Newport Ave. and several footbridges along the way offering opportunities to cross the river. Boat landings at McKay, Miller's Landing, Drake, Harmon and Brooks parks provide river access.

**DRT - OLD MILL REACH:** Located from Farewell Bend to McKay parks, trails are present on both sides of the river in addition to an extensive private trail system throughout the Old Mill District. Once home to two large lumber mills, today the Old Mill is a mix of parks, trails, shops and other businesses. Three footbridges connect trails across the river, providing convenient loops. Farewell Bend, Riverbend and McKay parks provide boat landings for paddlers using the Deschutes River water trail.

**DRT - SOUTH CANYON REACH:** Located from Farewell Bend Park south to River Rim Park, this reach features trail sections on both sides of the river connected by a footbridge approximately 1.5 miles upstream of the Farewell Bend Park bridge. The river rushes through a beautiful canyon, cascading over rocks and logs.

**West side of the river:** Bicycles are not allowed on this section, but there is an alternative bike route that connects the Bill Healy Bridge to the Haul Road Trail along Century Drive.

**East side of the river:** The trail at the northern end is narrow and rocky in places. The trail continues to the Conley Brooks Bridge and crosses the river to create a loop. Users can divert up to Brookwood Blvd. on a side trail that originates just upstream of the COID power plant. At Brookwood, the trail follows sidewalks through neighborhoods until reaching River Rim Park.

### DESCHUTES RIVER WATER TRAIL

The Deschutes River corridor also provides water-based trail opportunities allowing paddlers to enjoy the river while connecting to parks and other destinations. Access points and boat landings are at several locations. Be aware that the river difficulty changes dramatically from gentle moving water to Class 4 rapids above the Bill Healy Bridge. Floating the section above the Healy Bridge is recommended only for expert boaters. The Bend Hydro and Tumalo Irrigation dams require mandatory portaging. Featuring pneumatically-controlled waves, the Bend Whitewater Park in the Old Mill District has Class I - IV rapids. Look for more information on reverse and online at bendparksandrec.org.

**CASCADE HIGHLANDS TRAIL**  
This 2.9-mile trail begins at Overturf Park and travels west over Overturf Butte through neighborhoods to Mt. Washington Dr. It then continues west through Cascade Highlands before connecting to the Forest Service Phil's Trail system.

**CENTRAL OREGON HISTORIC CANAL TRAIL**  
From the trailhead at Blakely Park, the trail follows along Brookwood Blvd. and then heads southwest through Central Oregon Irrigation District (COID) property to an intersection with the Deschutes River Trail where users can travel along the river. Or, from Blakely Park, trail users can cross Brookwood Blvd. and head south to the Central Oregon Canal and take the canal ditch-road east to American Lane and beyond. The trail is 3.5 miles from Reed Market Rd. to the river.

**HAUL ROAD TRAIL**  
Haul Road Trail originates from McKay Park and travels west 3.2 miles to public lands connecting to the Deschutes National Forest trail system.

**LARKSPUR TRAIL**  
The Larkspur Trail extends 4.1 miles between Pilot Butte Middle School and Larkspur Park, passing through Pinewood Natural Area and Pilot Butte State Park. Users can add an additional mile and wide vista views with the trail to the summit of Pilot Butte.

**RILEY RANCH NATURE RESERVE TRAILS**  
These trails explore open meadows, forests, lava flows, cliffs and the river's rocky canyon with several loops to explore. (No bikes or dogs allowed.)

The Juniper Loop is 0.7 mile. The Sage Flats Loop is 0.9 mile. Both combine for a 1.6 mile loop.

The Canyon Loop is 1.25 miles and the state park trail extends 1.3 miles to Tumalo State Park.

Completing the three loop trails is approximately 6.5 miles.

**SHEVLIN PARK TRAILS**  
Shevlin Park is home to a diverse old-growth forest and an abundance of animals including birds, deer, elk and the occasional cougar and bear. To keep wildlife safe, dogs must be leashed.

**Shevlin Loop Trail:** This 6-mile trail follows the canyon rim, runs through old-growth ponderosa pine and crosses Tumalo Creek twice.

**Tumalo Creek Trail:** This 2.5-mile trail follows the creek upstream from the park entrance to the park's southern end, joining the Deschutes National Forest trail system. A preferred route for mountain bikes, the trail follows the canyon and links with the Forest Service Mrazek Trail.

### MORE ONLINE

For more trail summaries, interactive maps and additional details about BPRD trails, visit [bendparksandrec.org/trail-locator](http://bendparksandrec.org/trail-locator).

